

Elmsleigh Court Ellesmere
Road
Eccles
M30 9FH



Elmsleigh Court Ellesmere Road

£300,000

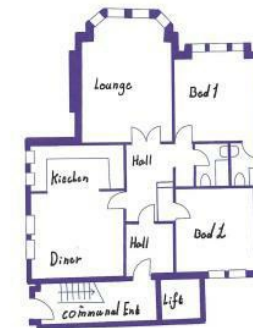


Contact

0161 470 1184

info@eliterealtyinvest.co.uk

Lounge: 4.25 x 6mt, Dining room: 3.98 x 3.4mt, Kitchen: 3.98 x 3.4mt,
Bed 1: 4.25 x 4.3mt, En Suite: 2.2 x 1.6mt, Bed 2: 4.3 x 4.8mt,
Bath: 2.2 x 1.6mt, Hall: 3.6 x 2.28mt, Entrance hall: 2.4 x 2.28mt



Local Authority

Council Tax Band D

EPC Rating C